

Operation Instructions

Make your choice...

LV805 Moving Type Human Figure Recognition Sensor



1 Safety Instruction

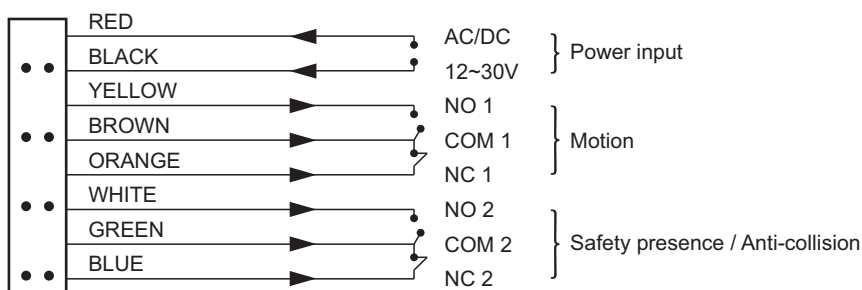


Thank you very much for purchasing this products, in order to use it correctly, please read this manual carefully before use it.

2 Product Overview

Sensor	
Shell	
Base	<div> <p>① Metal shrapnel * 2 ② Reset button ③ LED indicator light ④ Camera ⑤ Wiring terminal ⑥ Front cover</p> <p>⑦ Top cover ⑧ Bottom case ⑨ Mounting screw holes * 2 ⑩ Mounted threading hole ⑪ Base install screw holes * 2</p> </div>

3 Wiring Diagram



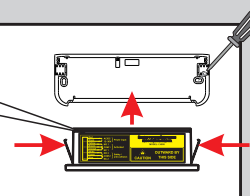
4 Installation

<p>[1]</p> <p>Place the positioning paper on the location to be installed.</p>	<p>[2]</p> <p>Drill the mounting holes according to the mark on the door.</p>
--	---

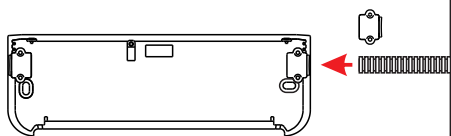
- [3] Fix the sensor's bottom case by screws, tight the metal shrapnel on the both sides of the sensor, and place the sensor into the bottom case.

Attentions

The scanning range of this series of sensors is unidirectional, when installation on site, please put the "Outward by this side" sign towards the human figure induction direction.

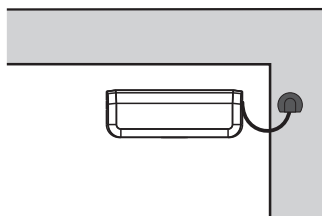


[4]



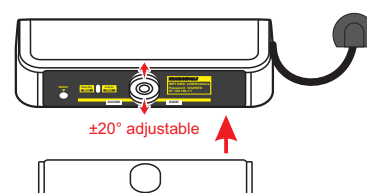
Put the connection wire of the automatic door machine into the matching hose, press it into the cable slot, and then cover the fixing bracket and fix it with screws.

[5]



Close the top cover, fixed the line with U-shaped, makes the door won't clip the line when it rotates.

[6]



The camera's angle with $\pm 20^\circ$ adjustable, whole detection area will change. Then close the translucent front cover.

5 Adjustment

Power-on Networking

After power-on, wait for 10 seconds for the start time of the internal program of the sensor. Until hear a buzzer voice that lasts 3 seconds, the device has created a Wi-Fi, please use your mobil phone or other devices to connect this Wi-Fi.

Device default Wi-Fi name: LV80XCamera_xxxx(Randomly generate a 4-digit sequence), Device default Wi-Fi password: 12345678

After connected(please turn off the data network of your mobile phone), open your phone browser, enter and search **192.168.1.1** enter the current device's control interface.

Control Interface

Wi-Fi name and password change area

Enter a new Wi-Fi name and password, click "change the account(confirm to restart)" key and the device will restart, new account will effective.

NOTE: Wi-Fi name cannot contain special characters, and the password must be set at least 8-digit.

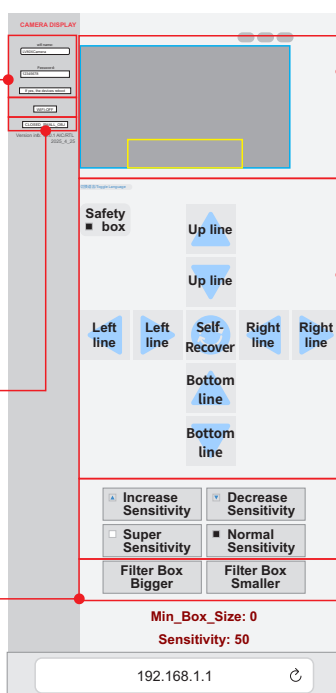
Click "WiFi-OFF" button to turn off the WiFi. For reconnection, press the RESET button or restart the device. Disable WiFi in confined spaces with poor ventilation to prevent overheating.

Small target filtering (defaulted ON)

When small targets are detected (such as people at a distance or other objects with small pixels that are misidentified as humanoids), they will be filtered out, and the door opening signal will not be sent (the grey button is ON state).

Small target filter box adjustment

When the filtering function is enabled, the basic filter box is 15 pixels(Min_box_size: 0). It indicates that small targets smaller than 15 pixels will be filtered out. Adjust via "Filter Box Bigger/Smaller" buttons in 2px increments across 20 levels (15-55px).



Detection range box

The adjustment interface have detection range box. Motion box - BLUE; Safety box - Yellow; Detection area inside sensing box - RED; Detection area outside sensing box - GREEN

Detection range adjustable area

When in the standby state, the motion / safety box in the upper left corner of this interface can be selected for adjustment. Two keys in each direction control the edges corresponding to the detection area respectively. "Self-recover" key, means to restore the factory defaulted setting(Full frame sensing range, sensitivity is 50).

Sensitivity adjustable area

Each time the sensitivity **increase/decrease** button is pressed, the sensitivity will increases / decreases by 10(the default sensitivity is 50), the higher the sensitivity, the more sensitive the detection, but the probability of misidentification also increases. **Super sensitivity** dual model recognition (recognition time about 200ms); **Normal sensitivity** single model recognition (recognition time about 100ms). Switching working mode will restart the device to take it effect (factory default super sensitivity mode)

6 LED indicator light

Standby	Keep detecting	Detected human	Overheating abnormally	No WLAN	Unable to connect to the network
BLUE LED light keeps on	RED LED light flashes slowly	RED LED light keeps on	RED LED light flashes quickly	BLUE LED light flashes slowly	BLUE LED light flashes quickly

7 Troubleshooting

Failures	Possible reasons	Improvements
LED indicator light off	The sensor is not connected to power supply	Check the cable connection, and whether power supply is normal
Red light is always on, but door won't be opened	Wiring fault	Check and adjust the wiring, re-power on
1, Detection isn't sensitive enough; 2, Object movement leads to false triggering.	Sensitivity is too low or too high	Adjust the sensitivity
People near to the doors, but activated/safety function don't work	Detection range adjustment deviation	Restore the default detection range and adjust it again



Due to the limitations of AI Neural Network deep learning, in some special scenes, the system will output certain confidence for some non-human figure objects (similar human figure), and it is possible to output signal. Please try to solve the problem by the following methods:

- 1, Rotate the position of the objects, may not be recognized as a human figure.
- 2, Reduce the sensitivity.
- 3, Adjust the lens angle of camera or adjust the detection selection area, so as to avoid the object appearing in the screen.

8 Technical parameters

Detection function:	human figure activated, safety
Camera pixel:	HD 1080P
Response speed:	100ms
View angle adjustment:	±20°
Power supply:	AC/DC 12-30V
Current:	Standby 95mA, action 130mA
Working temperature:	-20°C~60°C
Working humidity:	10%~90%RH
Installation height(max):	5 meters
Dimension:	157(L)x53(W)x34(H)mm

9 Packing list

NO.	ITEM	PCS	REMARK
1	Sensor	1	sensor, and 3 covers
2	Base	1	
3	Positioning paper	1	
4	8-Pin cable	1	2500mm
5	Wire pipe	1	400mm
6	Exposed installation bracket	2	
7	Screwdriver	1	
8	Cable fixing bracket	2	
9	Screws bag	1	
10	Installation instructions	1	